

Designed
to fulfill
your dreams.

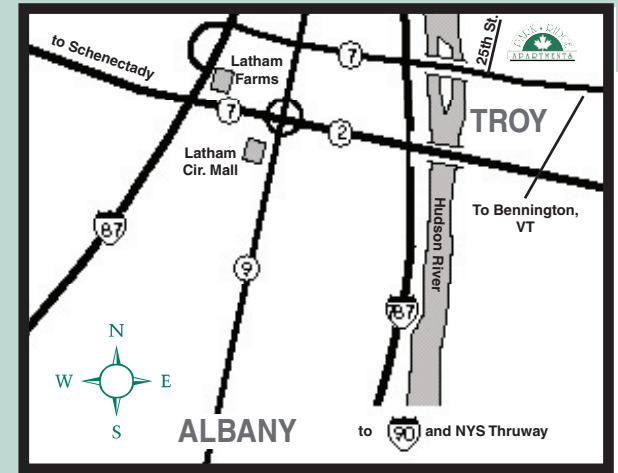


Imagine living on 22 acres of beautiful lawns and woods at a location close to everything in the Capital District. Imagine living in an apartment whose rooms are described as immense and wonderfully practical. Now imagine living in an apartment of exceptional elegance *and* affordability.

Imagine no more. Come to Park Ridge. Whether you're looking for a one-bedroom, two-bedroom, two-story townhouse, one-and-a-half baths, even a den, we offer a unique quality of living designed to fulfill your dreams.



You'll love living in the Park.



Getting to Park Ridge is easy from all directions. From the west, take Rt. 7 east over the Collar City Bridge, up Hoo-sick St. (Rt. 7). Proceed 3/4 mile. Park Ridge is on your left (north). Just look for our sign. You can't miss us!

The privacy and spaciousness of Park Ridge make it ideal for singles, families and retirees.

We invite you to come live in our community.



Route 7 at 25th Street
Troy, N.Y. 12180

(518) 272-7445 • Fax (518) 272-0273
www.parkridgeapartments.com



• APARTMENT COMMUNITIES •

Come inside and you'll find:

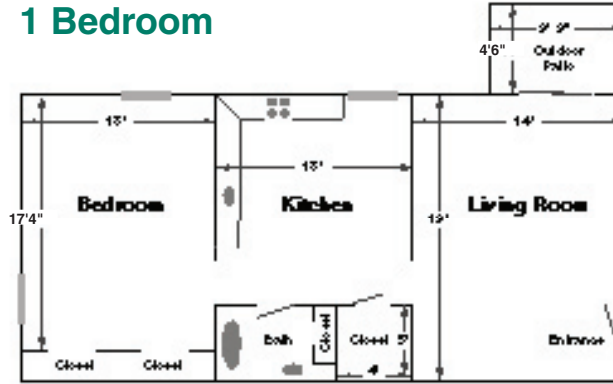
- spacious apartments, with wall-to-wall carpeting throughout
- air conditioning
- an abundance of closets, including walk-in closets in many units
- natural gas heat and hot water is available
- spacious eat-in kitchen with loads of cabinet space
- frost-free refrigerator/freezer, self-cleaning oven, plus dishwashers and available in most units
- one-and-one-half baths in many two-bedrooms and all townhouses
- ceiling fan, lovely lighting fixtures and designer window treatments
- conveniently located laundry facilities

Outside, you're close to everything:

- less than one mile to Rt. 787, taking you right to I-90 and just 5 miles to the Northway
- 1/4 mile to a shopping center and YMCA
- right on the CDTA bus line
- parking spaces located close to your apartment
- minutes from downtown Albany and Schenectady
- convenient walk to area hospitals and medical facilities
- close to public and private schools
- surrounded by sports, culture, dining and entertainment
- adjacent to Frear Park and its municipal golf course
- at the foothills of the Berkshires
- convenient to Massachusetts and Vermont skiing

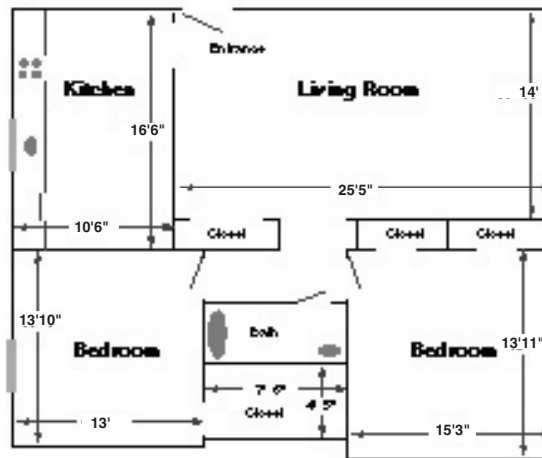
Our experienced and courteous staff wants you to feel totally at home at Park Ridge. We know that extra attention to detail really matters... for your comfort, happiness and well-being. You'll find this attention in the lovely landscaping as well as the immaculate apartment you move into.

1 Bedroom



(typical)

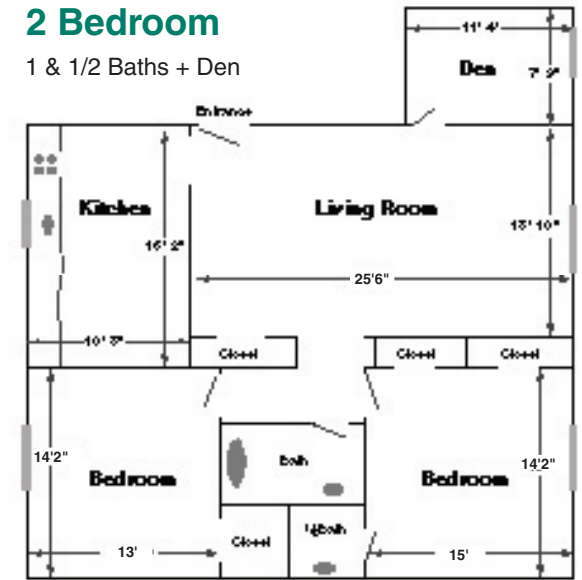
2 Bedroom



(typical)

2 Bedroom

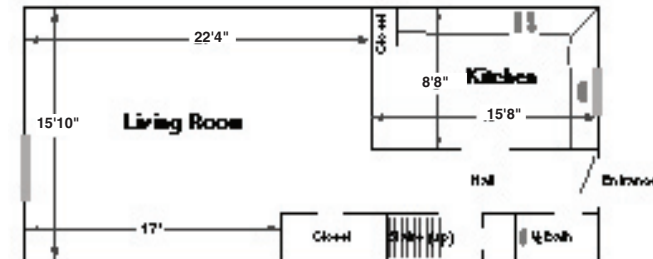
1 & 1/2 Baths + Den



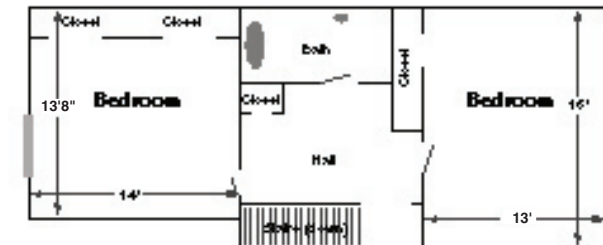
(typical)

Townhouse

First Floor



Second Floor



The privacy and spaciousness of Park Ridge make it ideal for singles, families and retirees. We invite you to come live in our community.

You'll love living in the Park

